



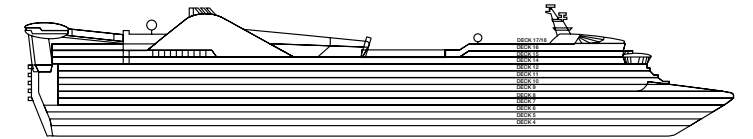
ACCOMMODATIONS SYMBOL LEGEND

- ★ Twin Beds do not convert to a King Bed
- ▶ King Bed does not convert to Twin Beds
- ★ 2 Twin Beds (convert to King) and Single Sofa Bed
- ★ 2 Twin Beds (convert to King) and 1 Upper Pullman
- ✳ 2 Twin Beds (convert to King) and 1 Upper Pullman (Beds do not convert to King when Pullman in use)
- 2 Twin Beds (convert to King), Single Sofa Bed and 1 Upper Pullman
- † 2 Twin Beds (convert to King) and Double Sofa Bed
- 2 Twin Beds (convert to King) and 2 Upper Pullmans
- ◀ King Bed (does not convert to Twin Beds) and Double Sofa Bed
- ✳ 2 Twin Beds (convert to King) and 2 Upper Pullmans (Beds do not convert to King when Pullmans in use)
- ◁ Connecting staterooms (ideal for families and groups of friends)
- 🚭 All accommodations are non-smoking.

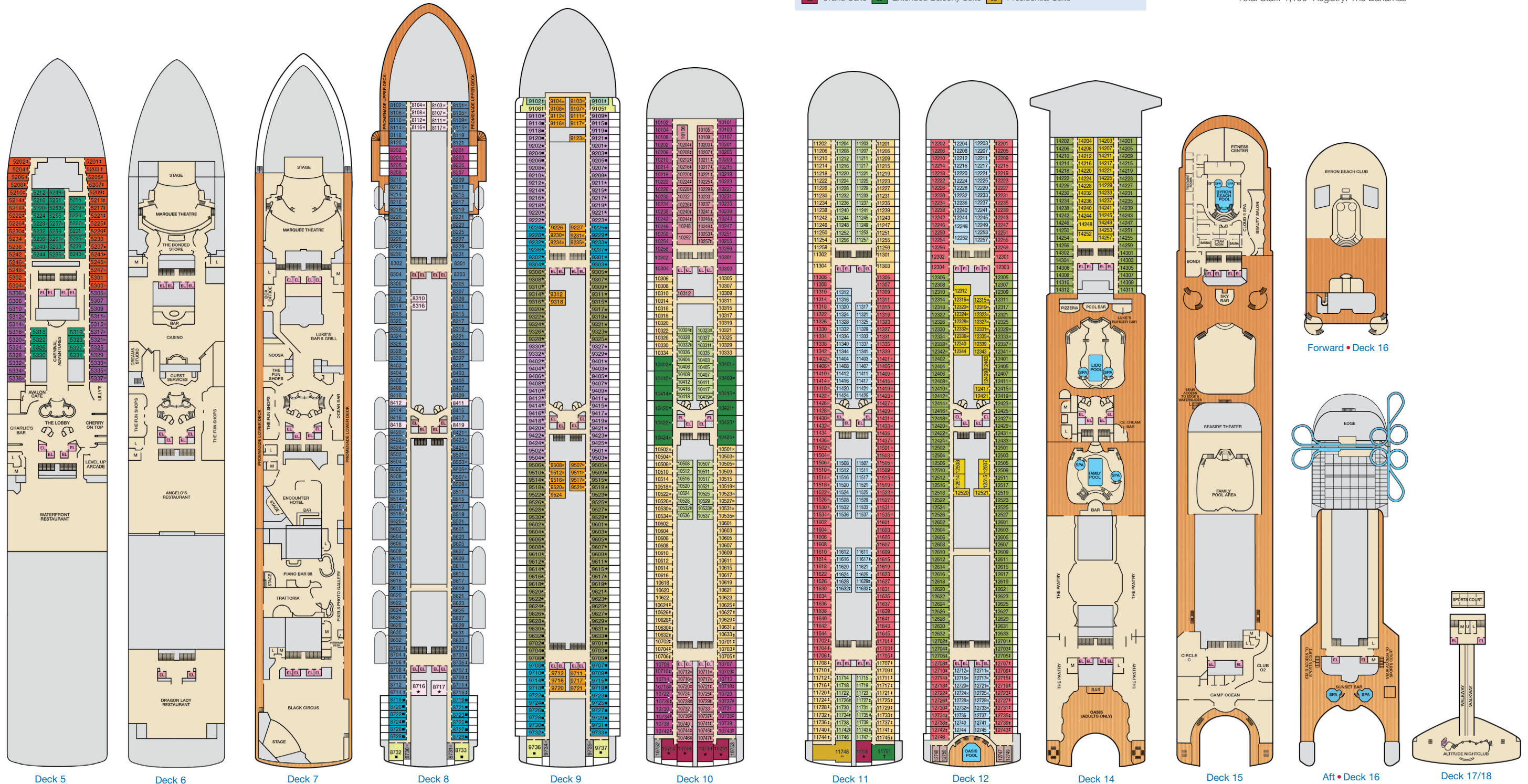
Accessible staterooms are available for guests with disabilities. For details, please contact: **For US guests:** Call Guest Access Services at 1-800-438-6744 ext. 70025, or visit <https://www.carnival.com/about-carnival/special-needs>
For Australia and New Zealand guests: Call the Carnival Reservations Department, Guest Services: Australia 13 31 94; New Zealand 0800 442 095.

CATEGORIES

- PT Porthole
- 4A 4B 4C 4D 4E 4F 4G 4H Interior
- 5A Ocean View (obstructed views)
- 6A 6B Ocean View
- 8A 8B 8C 8D Balcony
- 8M Aft-View Extended Balcony
- OS 01 Ocean Suite
- BY Ocean Suite
- VB Vista Suite
- GB Grand Suite
- EB Extended Balcony Suite
- SB Presidential Suite



Gross Tonnage: 108,865 Length: 951 Feet Beam: 118 Feet
 Cruising Speed: 20 Knots Guest Capacity: 2,600 (Double Occupancy)
 Total Staff: 1,100 Registry: The Bahamas



Forward • Deck 16

Aft • Deck 16